

BUILDING SOLUTIONS

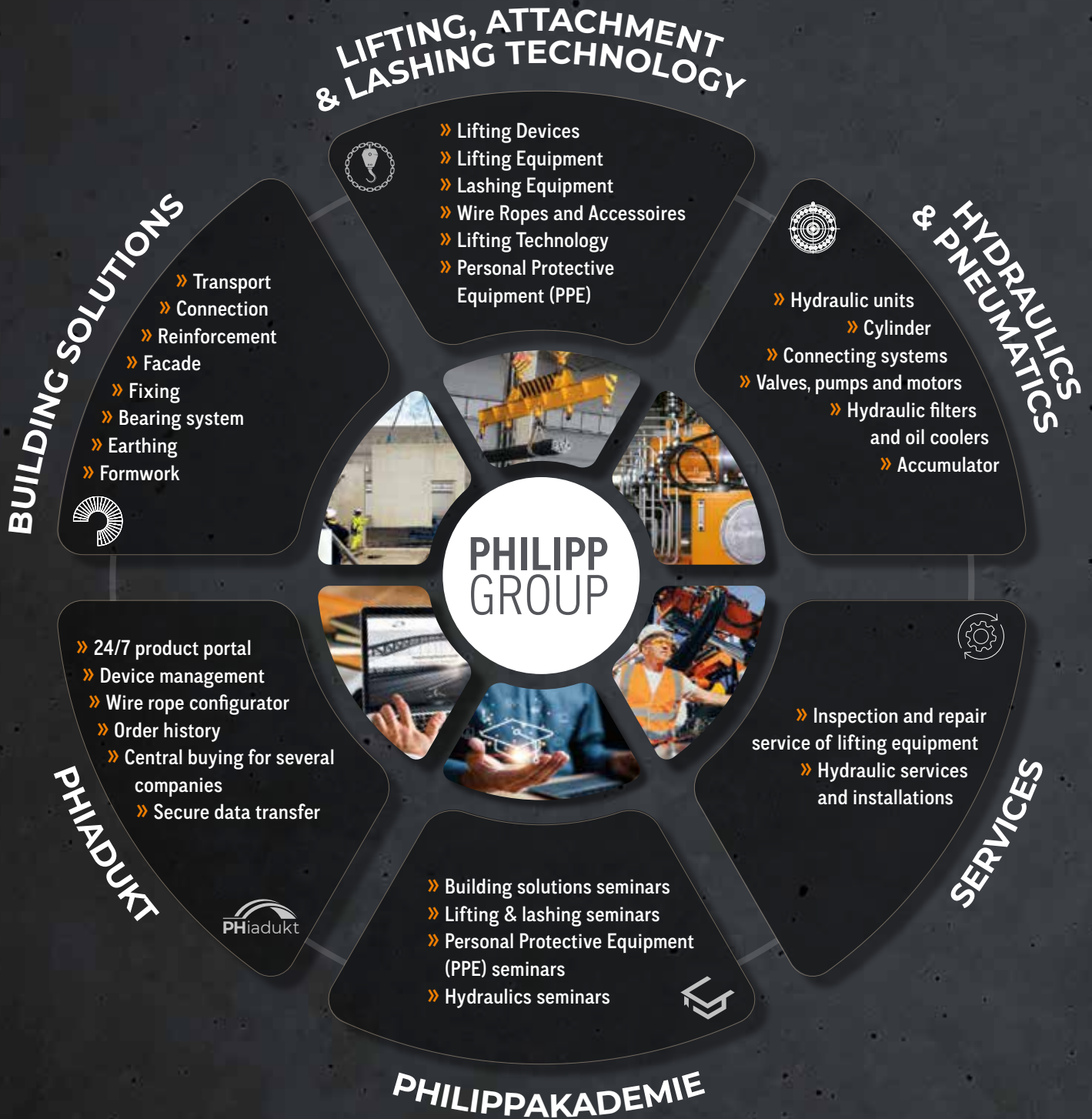


NEW
Product overview



PORTFOLIO 360°

PRODUCTS AND SERVICES

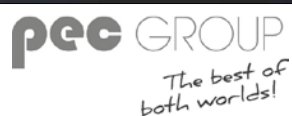


WE PROVIDE STRENGTH AND STABILITY
IN AN EVER-CHANGING WORLD.

CONTENT

» INTRODUCTION	4
» YOUR PROJECT – OUR SOLUTIONS	4
» TRANSPORT	6
» CONNECTION	8
» FACADES	10
» FIXATION	12
» BEARING SYSTEMS WITH NOISE REDUCTION	14
» EATHING/GROUNDING	16
» LIFTING DEVICES	18
» PHIADUKT	20
» PHILIPP LAB	21
» SERVICES	22

OUR PARTNER FOR BUILDING SOLUTIONS



Dear business partners and friends of the company,

As the CEO of the **PHILIPP**GROUP I am proud to be a part of this 50-year company history. Our family and company has continuously evolved and is now a major player in the market for innovative and high quality products and services - especially for the precast concrete industry, but also beyond.

With more than 250 employees at five locations in Germany and over 30 international co-operation partners, we are a reliable manufacturer and supplier in the fields of building solutions, hydraulics, lifting and lashing technology as well as hydraulic power packs. Thanks to our locations in Aschaffenburg, Neuss, Coswig, Saalfelden (Austria) and, more recently, Tannheim in the Allgäu region, we can offer you the best service throughout Germany and beyond.

Our innovative strength is reflected in numerous international patents. Not only the high quality of our products, but also our outstanding service and fast delivery our customers appreciate.

We have been focussing on your needs for over five decades: with innovative solutions, a dedicated team of highly qualified specialists and a sustainable, digitally orientated way of working, we set standards in our industry.

In particular we are proud of our PHILIPP LAB and the **PHi**adukt online service portal, which offers you round-the-clock access to modern calculation systems and our comprehensive product portfolio.

Convince yourself of the **PHILIPP**GROUP and benefit from the advantages of an all-in-one provider.

We thank you for your interest and confidence.



Thorsten Philipp and his team



YOUR PROJECT – OUR SOLUTIONS

Your building project deserves a solution that is precisely tailored to your requirements. With the **PHILIPPGROUP**, you can rely on a partner who understands your needs and supports you every step of the way – from the initial idea to a successful completion.

To ensure that your project is implemented efficiently and smoothly, we analyse the requirements together with you and ensure that the best components and solutions are selected as early as the planning phase. Our focus is on saving you time and money by offering comprehensive advice and tried-and-tested approaches.

You benefit from well thought-out, ready-to-use solutions or customised concepts – depending on your project requirements. At the same time, we ensure that deliveries are reliable so that your processes remain manageable and your construction site progresses without delay. With the **PHILIPPGROUP**, you have a partner who understands your challenges and actively supports you in achieving your targets. Your success is our motivation.



Our expert team of the technical department as well as our internal sales is available for you via telephone, e-mail, video conference or you can contact our competent field sales.

TEAM BUILDING SOLUTIONS

+49 6021 4027-300

bautechnik@philipp-gruppe.de

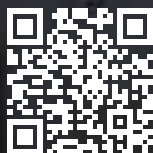
TRANSPORT

The **PHILIPPGROUP's** transport anchors face "heavy" challenges every day in the transport and mounting of precast concrete elements. Here, the safety of people in the precast plant, on the construction site as well as during use is particularly close to our hearts. With high-quality and precisely manufactured transport anchors, the **PHILIPPGROUP** proves that quality creates trust and thus safety. Continuous quality assurance measures additionally strengthen this trust.

The production of transport anchor systems is regulated by European-wide standards, on the one hand the so-called Machinery Directive and on the other hand EN 13155. On the basis of these regulations, all transport anchor systems are CE marked.

In addition to transport anchor systems, the **PHILIPPGROUP** also offers complementary products from the field of lifting, attachment and lashing technology, such as lifting devices and rigging hardware for a wide range of requirements. The **PHILIPPGROUP** offers complete systems from a single source, from crane hooks to transport anchors, and thus stands for all-round solutions for all requirements in the field of hoisting.

SOTFWARE
Easy design for
transport anchors in
single-flight stairs.



“

TRANSPORT AND MOUNTING - FOR SURE



CONNECTION

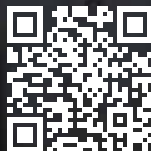
In the modern skeleton construction method, a wide variety of connection solutions are required and applied. The focus of the solutions here is mainly on vertical connections for walls to each other and to columns.

Most of these connections can be realised with our range of boxes or rails with flexible wire rope loops that create joints with high load bearing capacities. The joints are filled with a high-strength mortar finally. All in all, wire rope loop systems significantly simplify the mounting and connecting of concrete elements due to their flexibility, regardless of whether only precast elements or in-situ concrete constructions combined with them are used.

Solutions for simple, constructive connections, i.e. without transferring static loads, are also available using various product types.

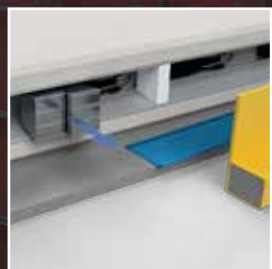
SOTFWARE

Fast design of approved wire rope loop systems (e.g. POWER Duo).



“

CREATING CONNECTIONS - BUT THE RIGHT WAY!



FACADE

The appearance of many prefabricated buildings is essentially characterised by the look of their facades. Very often, these precast concrete elements are produced in the fairly economical sandwich technology, which includes a load-bearing layer, a visible facing layer and thermal insulation in between.

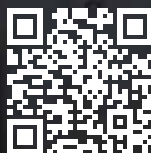
The non-load-bearing facing layer is connected to the load-bearing layer through the insulation by anchors made of corrosion-free material and form a system of load-bearing anchors and pins that transfer vertical and horizontal forces into the load-bearing layer.

Well-established, long-time tested and state of the art solutions are available to connect the two layers which fulfil the highest technical requirements and are approved.



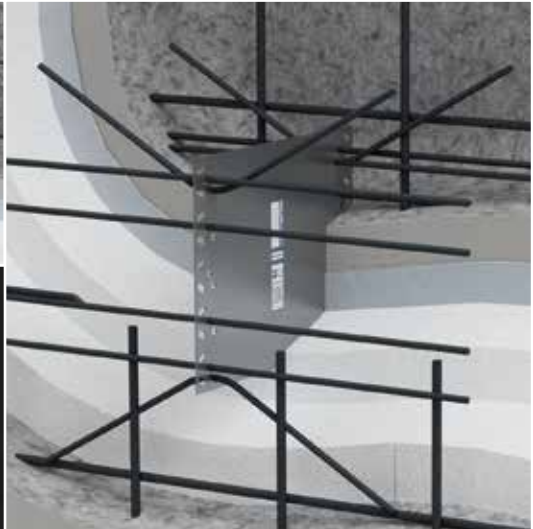
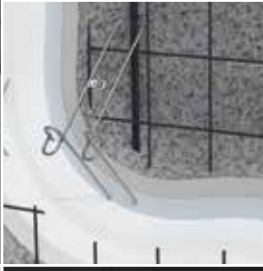
SOTFWARE

The new and simple design of anchors for reinforced concrete sandwich facades.



“

IMPRESSIVE FAÇADES NEED LOAD-BEARING ANCHORS!



FIXATION

Fixing solutions are of existential importance in construction technology. Constructions often have to be fixed directly to precast concrete elements such as panels, slabs or beams – and preferably quickly and easily to reduce mounting costs. Predefined fixing points with high load-bearing capacities offer ideal conditions for this compared to retrofitted solutions.

Whether for prefabricated or in-situ concrete constructions, profiled channels or individual single anchors in various shapes offer a wide range of applications for fixings in concrete.

SOTFTWARE

Permanent fixation of any type of structures to precast concrete elements with the PB anchor.



“

FIXINGS THAT “HOLD” WHAT THEY PROMISE



BEARING SYSTEMS WITH NOISE REDUCTION

Building physics requirements are becoming increasingly important in both precast and in-situ concrete structures. Here, the protection of human health but also the growing demands for comfort are gaining in importance.

In this context, noise protection plays a significant role in ensuring that unacceptable disturbances due to sound transmission do not occur. Besides airborne sound insulation, impact sound insulation is an important part in the structural-physical consideration of a building.

Stairs and landings shall be installed in buildings in such a way that they are acoustically decoupled, so that impact sound transmission from the staircase system via the staircase walls or structural slabs is prevented. With prefabricated or in-situ reinforced concrete elements, suitable decoupling elements can fulfil this requirement. The secret of sound insulation here lies in the actual elastomeric bearings, which are the most important parts of the elements.

The **PHILIPPGROUP** offers approved and type-tested products that have passed building acoustics tests in accordance with DIN 7396 and enable compliance with the impact sound insulation requirements of DIN 4109. An expert opinion is also available on the fire behaviour of various products.



“

DID YOU HEAR THAT?



EARTHING

Earthing technology is always used when a defined reference potential or potential equalisation is to be established. This is to short-circuit any voltages that may occur. Basically, measures are taken that are necessary to connect an electrical part to earth.

Traction system grounding

The railroad is one of the oldest and proven means of passenger and freight transportation. The ongoing development of railway drive and control technology from mechanical to electrical systems has led to a significant increase in the demands placed on the grounding of railway properties. Certified solutions from PHILIPP earthing technology, such as sleeves and connectors, are ideal for both the German and Austrian railways.

The task of earthing sleeves and connectors is to electrically connect conductive structures – such as platforms, retaining walls, tunnel components, railway stations, steel and concrete masts – to the railway line or track. Supported by the PHILIPP GROUP's assistance, the planner can thus safely put together solutions that ensure the protection of persons and equipment in the area around the track system.

The various versions of PHILIPP earthing sleeves have been tested in accordance with "DB Guideline 997 02 Overhead line systems, return current routing, railroad grounding and equipotential bonding", approved by the Federal Railway Authority and included in the Deutsche Bahn's list of drawings under "3 Ebs 15.03.19 - 1" ff. The available PHILIPP earthing connectors are manufactured and supplied under the current requirements of the DB drawing regulations "4 Ebs 15.03.17 - 1" ff. We will be happy to advise you!



“

WIDE RANGE OF EARTHING TECHNOLOGY



LIFTING DEVICES

The **PHILIPPGROUP** offers you a comprehensive range of lifting devices, which includes both standardised solutions and customised designs - for maximum flexibility in your projects. Our focus is on the safe handling of loads in the precast concrete industry. We also offer load securing products to ensure safety and efficiency when transporting and storing loads, and we take responsibility for quality and standard-compliant production in accordance with EN ISO 9001 and EN 1090-1 and -2.

In addition to our spreader beam systems, we offer you a pioneering solution for handling heavy loads: the **GANTERUD** leveling device. As the exclusive supplier of this innovative product, we enable you to move heavy objects weighing up to 20 tonnes with the highest precision. **GANTERUD** levelling devices consist of a robust housing, a reliable electric motor and state-of-the-art technology that enables precise levelling and handling of loads. A particular advantage is the remote control, which allows precise adjustment of the inclination during the lifting process - ideal for narrow and hard-to-reach places. This technology not only minimises the risk of overloading, but also saves time by enabling a fast and safe process on the construction site.

With **GANTERUD** levelling devices and our spreader beams, you can handle loads efficiently and safely, regardless of whether they are heavy precast concrete parts or complex construction elements. Trust in the **PHILIPPGROUP** as your partner for standardised lifting devices and innovative special solutions!

Contact us:

+ 49 6021 40 27-220 | duh@philipp-gruppe.de

Or find out more at www.philipp-group.de





PHiadukt

YOUR SERVICE PLATFORM

A short overview of what you can expect in our PHILIPPportal



View order status

All information about your orders, incl. invoice and delivery notes.



Check delivery status

Keep track of the dispatch and delivery status of your order so that you can plan precisely.



Manage your offers

Your individual PHILIPP offer can be easily managed online, whenever you need it.



24/7 online ordering

More than 100.000 articles from our PHILIPP product range available online and can be ordered with one click.



Real-time notifications

We like to inform you about new dispatch information, reminders or other information.



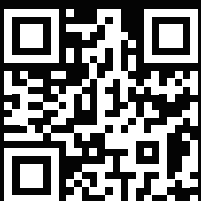
Wire rope configurator

Configure your customised wire rope online at any time and find exactly what you need.



NOW

Scan QR Code
and find out more
about PHiadukt!



PHILIPP LAB

SOFTWARE SOLUTIONS FOR THE PREFABRICATED BUILDING

THE **NEW** SOFTWARE PORTAL

» PHacade

The modern way to design anchor systems for sandwich facades

» POWER connectors

Quick design of certified connections with flexible wire rope loops
(e.g. POWER Duo)

» StepPHix

Design of transport anchors for single-flight stairs

» CAD-library

Model data (2-D/3-D) available in various export formats for
different CAD systems

» PHixation

Permanent fixation of any constructions to precast concrete members
with the PB anchor

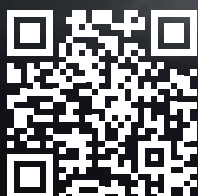
» PROFIS

Professional design of classic anchor channels of all sizes

- » Faster access to software tools from PHILIPP Building Solutions
- » Simple and clearly structured portal - everything at a glance
- » Optimized and powerful tools - from and for planners
- » For even more efficiency in the design of parts in precast constructions
- » After quick registration free access to all software tools

NOW

register
and start
immediately!



SERVICES

We support your project both professionally and in an advisory capacity. In this context, we provide solutions for the lifting and installation of precast concrete elements for almost any requirement. If no standards can be used for this, we react flexibly with (product) customised solutions.



SPECIAL DESIGNS

The **PHILIPPGROUP** offers special designs in Building Solutions that are specially tailored to the needs of our customers. Each special design is developed individually and according to the specific requirements of the application. Highest precision and quality ensure that our customers' expectations are met in full.



PRACTICAL TESTS ON SITE

We set a high value to practical tests on site in order to achieve the best possible results. Here, the customer's concepts are tested and optimised in a real environment. The experts from the **PHILIPPGROUP** contribute their expertise and experience to all tests. We ensure that all requirements are properly covered in our planning.



PLANNING SUPPORT

A wide range of options are available from the **PHILIPPGROUP** as planning material:

- » latest design software
- » planning documents
- » CAD data and much more

These materials are always available at www.philipp-group.de and help you to plan and realize your construction projects efficiently and precisely.

Furthermore we offer practice-orientated and user-friendly software tools that make it easier for you to work with our products. Whether you need calculations for planning or helpful CAD libraries for design - we provide them to you free of charge. Detailed, product-specific Installation and Application Instructions as well as easy-to-understand animations complete our information package for planners.

TRAININGS

With detailed training content and information materials, the **PHILIPPACADEMY** enhances your knowledge and the skills of your employees from planning and production constantly. Our comprehensive trainings of the **PHILIPPACADEMY** are held by our experts at the customers' premises, online or via webinar.

Find the latest dates under:



APPROVALS

At the **PHILIPPGROUP** we take great care to ensure that our solutions comply with applicable standards and regulations. We often work closely with accredited notified bodies to ensure that the solutions we offer meet the high requirements. In this context, test certified structural calculations or approvals create the highest level of confidence that you can rely on the quality and safety of the products without restriction.

PHIADUKT

With our webbased self-service portal "**PHiadukt**", we have built a digital bridge between suppliers and end customer. Being able to place orders online and check the processing status of orders in detail at any time has long been part of everyday life in the private sector, so why not in the B2B sector as well? An early warning system for possible delivery bottlenecks of certain products can avoid production disruptions and delays.

Still no access? **REGISTER NOW**



PHILIPPGRUPPE

HEADQUARTERS

Lilienthalstraße 7-9
63741 Aschaffenburg
☎ + 49 6021 40 27-0
✉ info@philipp-gruppe.de

PRODUCTION AND LOGISTICS

Hauptstraße 204
63814 Mainaschaff
☎ + 49 6021 40 27-0
✉ info@philipp-gruppe.de

OFFICE COSWIG

Roßlauer Straße 70
06869 Coswig/Anhalt
☎ + 49 34903 6 94-0
✉ info@philipp-gruppe.de

OFFICE NEUSS

Sperberweg 37
41468 Neuss
☎ + 49 2131 3 59 18-0
✉ info@philipp-gruppe.de

OFFICE TANNHEIM

Robert-Bosch-Weg 12
88459 Tannheim / Allgäu
☎ + 49 8395 81335-0
✉ info@philipp-gruppe.de

PHILIPP VERTRIEBS GMBH

Pfaffing 36
5760 Saalfelden / Salzburg
☎ + 43 6582 7 04 01
✉ info@philipp-gruppe.at



HEADQUARTERS Aschaffenburg



Visit us! www.philipp-group.de