

NEWSLETTER

JUNE 2023

» COOPERATION PAKON AG AND PHILIPPGRUPP

PHILIPP started a strategic alliance with the Swiss company Pakon AG. With this cooperation our product range becomes much wider and step for step we evolve to a single-source provider. Synergy effects are also used to your interest to provide technically well-proven and competitive solutions. Ultimately, all parties involved benefit from the mutual increase in advantages.

The start was with high-quality, fully developed and already market-known bearing systems with noise reduction and fire protection. Then it continues with shear dowels (see below).

» STEPPHIX – DESIGN OF TRANSPORT ANCHORS IN STAIRS

Stairs belong to the most demanding concrete elements for planners as well as producers. In particular, the individual design leads to challenges for the production as well as for a safe transport and installation on-site. In this regard, a wide variety of load cases have to be considered for those lifting anchor systems that can be used here.

Now, the simple software “stepPHix” for the design of lifting anchor systems (Threaded or Spherical head transport anchors) in single-flight stairs is available. With only a few entries, a design is made quickly and easily. This web-based software is free and provides a complete lifting solution as a PDF output.

Unbeatable time-saving for the planner and a big step towards more safety when handling with stairs.

» SHEAR DOWELS FOR A WIDE RANGE OF APPLICATIONS

It is hard to imagine how building projects without shear dowels with their wide range of applications are realized. Here, the classic application is the transfer of shear forces e. g. in expansion joints.

The available portfolio consists of simple dowels for the transfer of low forces and heavy-duty ones for high demands. Independent of this, all solutions are approved and can be used also in case of fire. All dowel solutions differ mainly in sizes, material and possibilities for movements (right-angled and/or parallel to the joint).

Available solutions are often smaller compared to the competition and thus save resources in many ways.

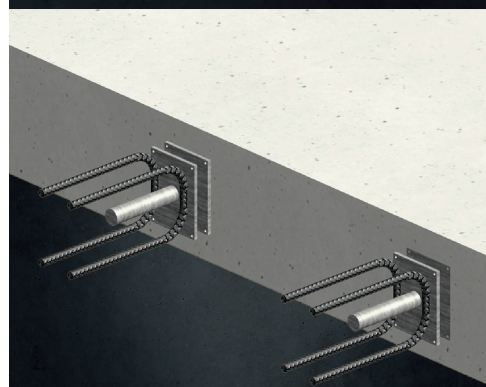
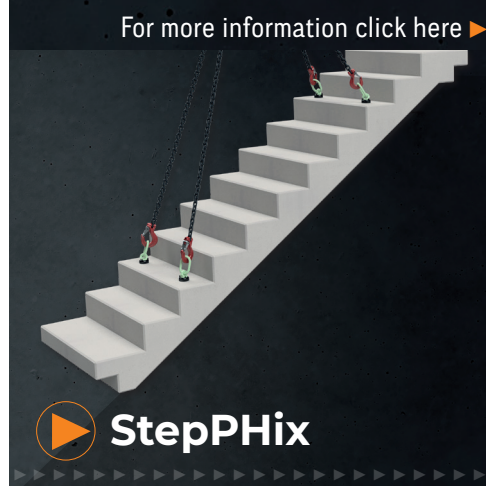
» GANTERUD LEVELLING UNITS

- » What if lifting, levelling, and turning of light and heavy objects would be easier than before?
- » What if loads are levelled effectively and safely with high precision?
- » What if there are robust units which are durable and reliable so that only a minimal service is required?
- » What if productivity can be increased very easily?

Have you ever heard of Ganterud levelling units?

The compact, remote-controlled units are equipped with battery-powered electric motors and can lift elements up to 20 t in the maximum configuration.

PHILIPPGRUPP



PHILIPP GmbH
Lilienthalstrasse 7-9
63741 Aschaffenburg

+ 49 6021 40 27-0
info@philipp-gruppe.de

© 2023 PHILIPP GmbH, Technical changes and errors reserved



www.philipp-group.de