

Criteria for replacement state of Lifty / Lifty SL

Lifting devices must be inspected according to the regulation DGUV 100-500, chapter 2.8 par. 3.15.4, by an expert annually considering the following criteria. Depending on the working conditions the inspections might be necessary in shorter intervals than only once a year. This might be caused by frequent use, increased wear, corrosion or heat treatment.

Prior inspection of the Lifty it must be cleaned. Within an inspection the following points have to be considered:



Twisted chain link



Deformed chain link



Exceeding of measurement T_{max}



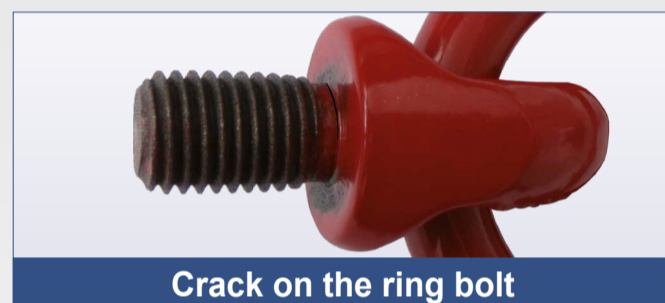
Deformation of the thread



Crack in chain link



Pressure marks



Crack on the ring bolt



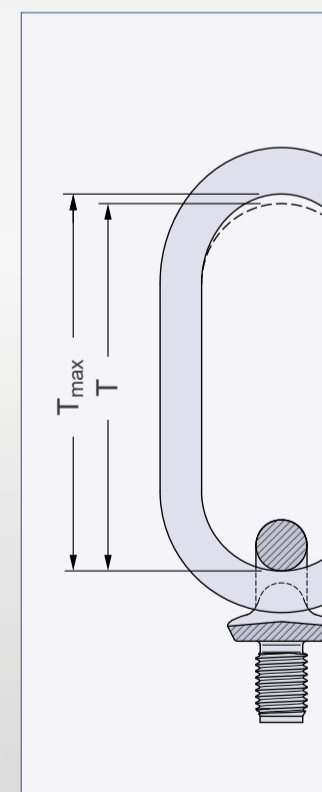
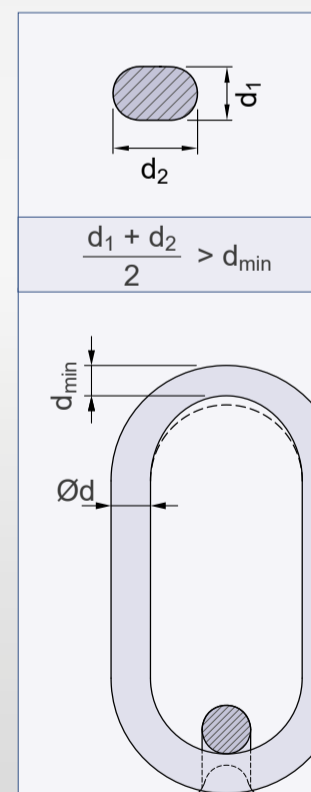
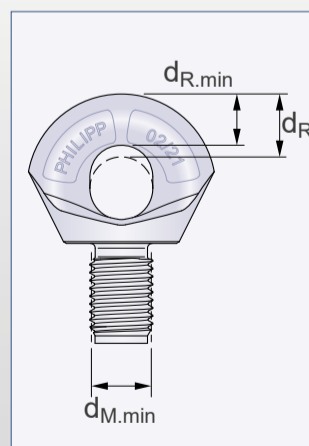
Deformation of the threaded bolt

- ✓ Breakage of chain link
- ✓ Deformed or twisted chain link (Picture)
- ✓ Pressure marks on chain link caused by rigging hardware (Picture)
- ✓ Cracks or the capacity reducing corrosion pits (Picture)
- ✓ Damaged thread (Picture) / twisted threaded bolt
- ✓ Welding or other strong heat influences
- ✓ Marking not readable anymore
- ✓ Exceeding of upper or lower test dimensions (Picture)

Test dimensions

Load class	$d_{M.min}$ [mm]	d_R [mm]	$d_{R.min}$ [mm]	$\varnothing d$ [mm]	d_{min} [mm]	T [mm]	T_{max} [mm]
12	11.50	16	14.4	13	11.7	115	121
14	13.50	16	14.4	13	11.7	115	121
16	15.45	16	14.4	13	11.7	115	121
18	17.40	22	19.8	16	14.4	115	121
20	19.40	22	19.8	16	14.4	115	121
24	23.40	22	19.8	16	14.4	115	121
30	29.40	32	28.8	22	19.8	115	121
36	35.40	32	28.8	22	19.8	115	121
42	41.20	39	35.1	26	23.4	139	147
52	51.20	39	35.1	26	23.4	139	189

① Version of Lifty to manufacture 12/20 (see chain link)



If one of the above-mentioned points is fulfilled the Lifty has reached its replacement state and must not be used anymore.

To be replaced

